

## Summary Earthquake Nepal 2015 by Karmapa's Healthcare Project

Dear friends of KHCP,

July 15, 2015

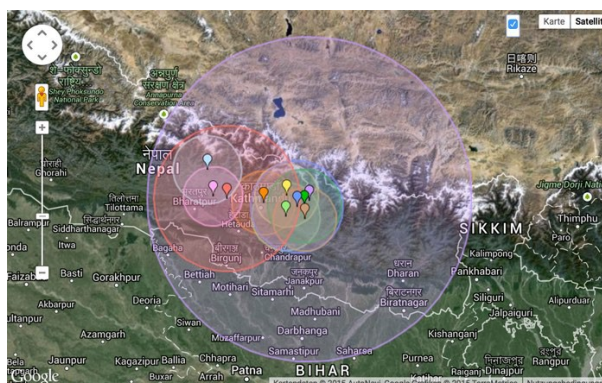
everyone was very busy in the weeks after the big earth quake. Let us give you an overview on how the KHCP has approached handling the situation.

- After the news broke on the quake, we contacted all our key persons by telephone or mail. This gave us an initial overview over the situation
- a news ticker on KHCP website and Facebook was installed to inform everyone and keep people updated
- as n addition to the ticker, two newsletters went out on short notice, informing our worldwide networks of friends via 5000 e-mail addresses about the urgency of assistance needed.
- we contacted all the institutions in Europe we work with, asking them to establish links to the ticker and to pass on relevant information to us.
- in a ad hoc conference with Diamondway, a mutual exchange of information was established. A Google group was established, listing key persons and forwarding news. This helped in improving coordination of activities.
- All the while, we stayed in touch with DHK University Hospital Kathmandu in Dhulikhel, which gave us an overview on the medical situation. In the initial days after the quake, Dhulikhel Hospital contacted all the monasteries and instutes, checking whether medical assistance was needed. One monk was seriously ill, he was transported to DHK, were he is currently still being treated.
- After having gained an overview on the situation, we decided to send a group of medics, which visited all the institutes. Employing a standardized questionnaire and individual patient treatments, providing the medical assistance needed. The support is being continued.
- The local needs were assessed in order to distribute donations and material in a fair and meaningful way
- the full analysis of the situation incl photos and data is included to this report, as is the transparent distribution of funds.
- This report is published and made available to all our supporters, volunteers, recipients and representatives of institutions plus the fiscal authorities of Germany in Kiel.

Our warmest thanks to everyone in Asia and worldwide!

Pia and Peter Cerveny / board of directors

Dr. Angelika Leist and Dr. Sonam Rinchen / head of medical board of KHCP



## **Preliminary account of all Nepal Earthquake Donations**

Dear friends,  
to let you know:

up to now 170.500 Euro had been donated for earthquake aid Nepal. That is a great amount. But in the face of all the needs and the plenty of monasteries to help, we pleased you to continue urgently with recurring donations.

Altogether we have constantly more than 800 persons in 16 institutions, organisations and initiatives. To all of them we have shared the money in relation of amount of persons and buildings as most fair as possible. The money have been or will transferred to the funds of the leading Rinpoches for the purpose of healthcare and rebuilding.

Finally it is about 170.000 Euro - therefore all donations for earthquake will be payed out!

### Donation Listing, updated on July 15, 2015:

- 20.000 Euro - Karmapa Shamarnag Committee
- 5.000 Euro - for goods and transportations Delhi-Kathmandu
- 25.000 Euro - Dhulikhel Hospital for immediate life-saving measures after earthquake, healthcare and rebuilding
- 20.000 Euro - Shangpa Rinpoche and Dubsing Rinpoche (healthcare and rebuilding Kirtipur, Lumbini, Pokhara, Muktinath)
- 20.000 Euro - Promise to Sherab Gyaltsen Rinpoche (healthcare and rebuilding Nala, Hasantar)
- 10.000 Euro - Monastery of Beru Khyentse Rinpoche Monastery Boudha (healthcare and rebuilding)
- 7.000 Euro - Promise to Sang Sang Rinpoche Monastery (healthcare and rebuilding)
- 7.000 Euro - Promise to Lopön Tsechu Monastery (healthcare and rebuilding)
- 7.000 Euro - Promise to Jigme Rinpoche (healthcare and rebuilding Swayambhu monastery)
- 4.000 Euro - Lama Nyima Dhagpo France (Distribution of goods in remote areas of Nepal)
- 6.500 Euro - SOH Orphanage and HIV Children of Chogyal Rinpoche
- 5.500 Euro - Children Spark Orphanage Kathmandu/Lalitpur
- 4.695 Euro - Distribution on the KHCP-medical tour of Dr. Sonam and Dr. Angelika
- 8.000 Euro - Provision for planned medical camps in coopertion with Dhulikhel Hospital for poor people in Boudha and Swayambhu
- 10.000 Euro - Rebuilding of Manang Gompa and clinic room of Sherab Gyaltsen Rinpoche
- 10.000 Euro - Rebuilding of Nala monastery of Sherab Gyaltsen Rinpoche
- 169.695 Euro - SUM

## **Final Medical Report after the earthquake in Nepal**

by Dr. Sonam Rinchen Lama

Karmapa's Healthcare Project, Dhulikhel Hospital, Department of Community Program

Consider 25<sup>th</sup> April 2015, Saturday as a "Black Day" of my life.

When Nepal hit by a major devastating earthquake on 25<sup>th</sup> April at magnitudes of 7.8 and followed by another big earthquake on 12<sup>th</sup> May 2015 at magnitude of 7.3 killing more than 8795 people and injured 22493 people, still missing hundreds of people.



Its epicenter was at Barpak, Gorkha district, and near by the Chinese border Kodari, Sindhupalchok respectively.

Hundreds of thousands of people were made homeless with entire villages flattened, across many districts of the country. Centuries-old buildings were destroyed at UNESCO World Heritage sites in the Kathmandu Valley, including some at the Kathmandu Durbar Square, the Patan Durbar Square, the Bhaktapur Durbar Square, the Changu Narayan Temple and the Swayambhunath Stupa. Geophysicists and other experts had warned for decades that Nepal was vulnerable to a deadly earthquake, particularly because of its geology, urbanization, and architecture. But still Nepal government lacks preparedness for that not only in rural area but also in cities area.

In the immediate aftermath of the disaster, volunteers rather than the government agencies were the driving force in relief distribution and even in reconstruction and rebuilding immediate and transitional shelter for the victims.

Now most of the foreign rescue and medical teams and volunteers are sent back to their respective countries. But I would like to salute and thank to all the volunteers who sacrifice for our brothers and sisters, families and relatives, for our Nepalese peoples and for our entire nation.

Still we can feel aftershock, search and Rescue operation, assessment and relief distribution has been continue from government, NGOs and private sectors, for this, Helicopters, Nepal Army, Nepal Police, Armed Police Force and Civil servants were mobilized.

Almost about 66.66% districts are affected by the earthquake along with series of aftershock, 50 out of 75 districts are affected in terms of major to minor physical destruction.

Kathmandu, Lalitpur, Bhaktapur, Nuwakot, Dhading, Kavrepalanchok, Sindhupalchok, Gorkha, Rasuwa, Dolakha, Makawanpur, Sindhuli, Ramechhap, Chitwan are the 14 major districts which is heavily affected. In these districts about 4786 school were affected and 1512 water supply were damaged. Lots of volunteers are trying to rebuild temporary school to resume the activities to avoid child trafficking and gender violence.



**According to Ministry of Home Affairs, Nepal / UNHCR (may 10 updated)**

- Number of People Killed: 8795, M3938 F4851,
- Number of People Injured: 22493
- Total House hold Damaged: 799062,  
Fully Damaged: 514710  
Partially Damaged: 284352
- Government House Fully Damaged: 2656
- Government House Partially Damaged: 3622
- Private House Fully Damaged: 512054
- Private House Partially Damaged: 280730
- Total No of school affected: 8292,  
Number of Affected School Building: 15353,  
Fully Damaged Classroom: 19654, Major Damaged Class room: 10960, Minor Damaged Class room: 16617, Water supply damaged at School: 1542
- Number of Major District affected: 14 in which  
Total Number of School: 5748  
Number of Classroom: 60798, Total Number of Affected School: 4786,  
Fully Damaged Classroom: 16370, Major Damaged Classroom: 7626, Minor Damaged Classroom: 11059,  
Water supply damaged at school: 1512 (source: Department of Education, Sanothimi, Bhaktapur )



(below): Devastating Earthquake destroyed lots of Karma Kagyu Monasteries in Nepal along with some world heritage site.



## **KHCP Medical Tour 28-May-2015 – 09-June-2015**

directed by Dr. Angelika Leist and Dr. Sonam Rinchen  
(heads of medical board of KHCP)

Our volunteers and team doctors from KHCP and Dhulikhel Hospital traveled to all of our Karma Kagyu Monasteries in Nepal to assess the physical condition and immediate helps in terms of relief or and medical aids.

### **Purpose of visit:**

- To evaluate the situation of the institute regarding physical and structural damage and any casualties from devastating earthquake.
- Screening program for monks and nuns of the institute.
- Psycho social counselling to monks and nuns.
- WASH (water, sanitation, hygiene) in Emergency Program in different monasteries.
- Deworming for monastic children.

### **Location of visit:**

Different Karma Kagyu Monasteries in Kathmandu, Kirtipur, Nala and Pokhara.

1. Jangchub Choling Monastery, Pokhara
2. Karma Dubgyu Choling Monastery, Matepani, Pokhara
3. Dhagpo Sheydrupling Monastic School, Nala, Kavre
4. KIBS - Kagyu Institute Buddhist Studies, Kirtipur
5. Spark Children Home, Lalitpur, KTM
6. Karma Ngedhon Osal Chokhorling, Hasantar, KTM
7. Sangey Choling Monastery, Swayambhu, KTM
8. Sertshang Orphanage Home, Swayambhu, KTM
9. Sharminub Institute, Raniban, KTM
10. Lhundrup Choling Kagyu Monastery, Bhudhanilkantha, KTM
11. Punarbac Plus, Swayambhu, KTM
12. Karma Tharjay Chokhorling Kagyupa Monastery, Boudha, KTM

**Total Population covered in different institutes; 742**

We had a great hospitality in every monasteries that we visited. We KHCP doctors Dr Angelika and Dhulikhel Hospital team treated almost about 400 monks and nuns. She was wonderful person with full of compassion and really takes care of the patients.

The effects of earthquake significantly reduce access to basic right of access to food, nutrition, education, health services, safe housing, protection, drinking water and sanitation in the affected area. In order to minimize the adverse effect the WASH (water, sanitation and hygiene) in emergency program is significantly important and right to carry out to reduce the consequences.

We provided not only screening program but also the WASH in emergency program in different monasteries focusing and involving the little monks and nuns. We teach them the technique and six steps of hand washing with soap to encourage and promote healthy life, better sanitation and safe and adequate drinking water. The proper disposal and management of organic solid waste so as to reduce major public health risks such as fly and rat breeding and surface water pollution. The kids are so happy to see us, they like to interact with us, share their knowledge with us. Along with this we discuss prevention on fecal-oral route transmission diseases like cholera, diarrhea and other water born disease that can be transmitted during this crises and pull it off from outbreaks in near future.



The main theme of this awareness program is to interact with them to avoid stress, make them calm and feel happy and joy among themselves to resume their daily activities as soon as possible. Psycho social counselling to them is also very important part of ours program.

There overall health condition is not bad but still we did this program successfully to improve the condition of the health and sanitation and hygiene of the monks and nuns.

**No of patient treated in different monasteries: 397**

<b>S.N.</b>	<b>Department</b>	<b>No. of Cases</b>
1	General Medicine	128
2	Gynecology	6
3	Ortho	36
4	ENT	37
5	Eye	50
6	Dermatology	39
7	Dental	101
	<b>Total</b>	<b>397</b>



Photo: Dr Angelika screening our little monks and paramedic Mr Bhuwan checking glucose level.

**Conditions of Monasteries after earthquake:**

Even though there are no casualties noted in the monasteries most of the monasteries are cracked and some of them are heavily destroyed by earthquake which needs immediate repair. The two monasteries Dhagpo Sheydrupling Monastic School, Nala, and Karma Tharjay Chokhorling Kagyupa Monastery, Boudha, are affected more than others monastery. The monks from the Boudha they were transferred to Bodhgaya for safety. The monks from the Nala monastery are staying in the same monasteries even though the top storage need completely repair but their living rooms are safe to stay. They are planning to replace that top storage with the bronze to reduce weight on the main monasteries.

Most of the people in Nepal stay in tent for couple of weeks to month. So as the monks also live in tent for few days to weeks. Till after few more days most of the monks are scared, nervous and terrified, they don't know to handle it. Then after a week it was settle down somehow. Now they are resuming their daily activities.

A nuns from Hasantar Nunnery, "We are at Nala monastery on Saturday reciting "White Tara" puja when first earthquake hit Nepal. I saw some monks are jumping like a frog on their seat then suddenly I saw the wall of the building are moving apart from each other and I can see the view outside shaking all the building and trees are dancing just in front of monasteries. I can't believe at first but when I asked some monks behind me then I realized they have also same experience as I do. I was not in dream, it's not illusion, I still can't believe".

As per the Man Bahadur Gurung, president of Manang Committee, Manang gompa located at Swayambhu, Kathmandu is considered as the soul of the Manang district of seven villages. It was built by late Pemba Tsering Gurung, in 2035 B.S. about 37 years ago. It is considered as the main foundation of Manang village which helps to connect each other, which helps to unite among them. Unfortunately it was completely destroyed by the 1<sup>st</sup> earthquake. Not only the building was collapsed all the valuable stuff and statues are destroyed. Even though Manang district is not so much affected by the earthquake but still all the Manang people are in deep sorrow. All the people of Manang are requesting to the government and international agencies to help them to rebuild it so as to help to reunite Manang people again.



Photo above: Discussion and Interaction on water born disease and its prevention and “Hand Washing with Soap” Protection from Disease that enhanced child survival and development.



KHCP with Manang committee president Mr Man Bdr Gurung, Khanda Gurung (president womens society), Eden Gurung (vice president women society).

#### **Next Plan:**

- Water sampling and water treatment.
- General free medical camp for leh people at Swayambhu and Boudha.
- PAP smear for cervical screening.
- First Aid training for the monks and nuns of respective monastery.

Prepared By: Dr Sonam Rinchen Lama, Medical Officer  
Karmapa's Healthcare Project, Dhulikhel Hospital, Department of Community Program

Please consider that such an earth quake leaves a workload behind for many years.  
So we need a sustainable support, best as a recurring donation.



## **List of all recipients** **incl report, photos and letters of thanks**

The institutes are listed in the order of the Rinpoches in charge

### **1. Sherab Gyaltsen Rinpoche:**

#### **1.1: Questionnaire. Karma Ngedhon Osal Chokhorling - Hasantar Nunnery**

Director: Sherab Gyaltsen Rinpoche  
- no fatalities or injuries during the earthquake

Number of Inhabitants:  
approx. 80 nuns live there (we couldn't find a more specific number, Dr. Sonam spoke of 87 nuns). 39 nuns and 3 employees (the chief and his wife as well as the night guard) attended the check-up.



#### **Medical Condition:**

The nuns are generally in good health but are all suffering from iron deficiency. Dr. Sonam and Dr. Angelika suspected that this has been caused by a worm infection. An elderly nun was found to be suffering from gallstones, but is afraid to have them surgically removed. As her condition is currently not life threatening and she should not be forced to undergo the procedure. The nuns are insufficiently vaccinated. The younger nuns are to be vaccinated. Dr. Sonam will be in charge of this.

Medical care is provided. The nuns asked for a regular provision of hygiene products, which will be covered by the KHCP budget. Cancer screenings are currently planned. Water is being inspected for infestation of parasites.

#### **Damages to the Building:**

In the morning we drove to Hasantar Nunnery. On the way we saw damage even more severe than in the city of Kathmandu. In some of the streets half of the buildings are either collapsed or severely damaged. Clearing and rebuilding work is being carried out everywhere. The earthquake severely damaged three of the living areas of the nunnery. They are in danger of collapsing.

#### **Living conditions:**

The nuns have spent most time after the earthquake in tents, but some tell us that they have started to sleep again in the damaged rooms as snakes often slither into the tents at night. They could also hear the tigers from the adjacent jungle roaring at night. Apparently, the fear of the unsecured building is less than the fear of the animals. (The fact that snakes are indeed a problem is something we have also been told by friends in Kathmandu who are also forced to sleep in tents).

#### **Other aspects impacting on the nunnery:**

The buildings of the four employees of the nunnery have been completely destroyed. The KHCP provided €2,000 emergency relief for the restructuring of the buildings, and we will soon receive photos of how the money was used.

According to the Anis, up to 300 people live in the surrounding area of the nunnery, many of whose buildings have collapsed or are severely damaged to the extent that they are uninhabitable.

The KHCP donated €20,000 for health care and €10,000 for building damage to Sherab Gyaltsen Rinpoche. The nuns receive the funds proportionally.



## 1.2 : Questionnaire. Dhagpo Sheydrub Ling (Nala)

Director: Sherab Gyaltsen Rinpoche

- no fatalities or injuries during the earthquake

Number of inhabitants: 105 monks and 5 employees

Medical and social conditions:

The monastery is located near Dhulikhel Hospital.

The KHCP has been supporting the people, predominantly the children, for many years through funds and Medcamps. They used to live in Swayambhu near Cora and Manang gumpa.

The KHCP examined and treated the inhabitants of the monastery and the people from the surrounding areas who came for help.

When the KHCP was on location, a total of 35 monks and one employee with discomfort were examined. A monk was diagnosed with chronic myelitis in his left knee. He had previously been treated with antibiotics, which didn't cure his condition. He is now treated for suspicion of tuberculosis. Many monks show signs of vitamin deficiency, which is unlikely due to their well-balanced diet. This raises the suspicion of worm infection. Sonam treated the monks with medication for worm infection no less than three months ago, but this treatment will have to be repeated. Dr. Sonam teaches the monks on basic hygiene and health care.

Building conditions:

One roof is severely damaged.

The roof will require laborious and costly reconstruction. The Gumpa itself is mainly intact, at least considering the load-bearing pillars. The walls, however, are cracked in many places which require repairing and supporting.

The grand paintings have to be stripped off the wall where it is cracked. Restoration of such paintings will be very costly, according to Sherab Gyaltsen Rinpoche. He explicitly expressed his wishes for donations to fund this endeavour.

Other:

All of Sherab Gyaltsen Rinpoche's institutes and monasteries received €20,000 from the KHCP to cover health care for 2015/16 and the reconstruction, as well as an additional €10,000 for the restoration of Nala Gumpa.



### 1.3: Questionnaire. Dhubgyu Chokorling Manang Monastery in Pokhara

Director: Sherab Gyaltsen Rinpoche

- no fatalities or injuries during the earthquake

Number of inhabitants: 75 monks and 4 employees  
live in the monastery

Medical and social situation:

The monastery is extremely clean. During our examinations, we discovered that dental hygiene was very good, and only two people need to see a dentist. All are healthy, exercise regularly and the person in charge of health and hygiene is very much in charge of the task. All inhabitants have been treated with medication for worm infections. It has been planned to conduct vaccinations. In order to avoid that medication be paid for by each individual, the KHCP has decided to provide an annual fund to cover the cost.

There are some problems regarding regular access to clean water. It is for this reason that a reservoir is being built at the spring in order to provide water for the monastery. The KHCP will consult Sherab Gyaltsen Rinpoche regarding this matter to discuss the support that can be provided.

Nyedon Rinpoche informs us that the financial situation is no longer sufficient as they are solely funded through the local community, which is now itself economically affected by the destruction of the earthquake. He also laments that, due to his low proficiency in English, he has been unable to attract bigger sponsors from the West. Although he has undergone an extensive monastic education, he never received instruction in English. The KHCP will get in touch with Rinpoche and we will see what we can do.

Building condition:

The damage caused to the monastery is minimal and has already been fixed. It only included minor scratches that had to be painted over.

Other:

As previously mentioned, Sherab Gyaltsen Rinpoche received €20,000 from the KHCP to cover the cost of health care for 2015/16. Aid will be paid as part of this sum.





## Shangpa Rinpoche / Dubsing Rinpoche

### 2.1: Questionnaire. KIBS - Kagyu Institute Buddhist Studies in Kitipur

Director: Shangpa Rinpoche

- no fatalities or injuries during the earthquake

Number of inhabitants: 40 nuns live in the nunnery but most of them are currently in Sharminup for the puja. There are 3 employees.

Medical and social conditions:

There is a hospital nearby. The KHCP has been supporting this site for many years now by providing funds and running medical camps that could also be attended by the people of the surrounding areas. This time, as in previous years, the people from the surrounding areas are in attendance and receive medical care.

Building conditions:

There are visible cracks in the Gompa but the damage appears repairable. An examination by an official state engineer has not taken place yet. The living areas are intact, except for small cracks in the plaster. As in other places, the nuns are sleeping outside in tents out of fear. Their "tents" are mere plastic sheets – the tents that were promised by Shangpha Rinpoche are on their way.

Other:

We spoke to a local politician. He told us that 20,000 people live in Kirtipur. 37 houses were damaged and 12 have been completely destroyed. Oxfam and UK Aid developed a kind of disaster relief programme for the area. In the surrounding areas of the monastery, there were 20 fatalities and more than 200 people injured. Cover for the homeless during the monsoon season is currently being planned. It has not been decided whether the monastery will receive help from the local authority.

All of Shangpa Rinpoche's and Dupsing Rinpoche's institutes and monasteries received €20,000 to cover health care costs for the year 2015/16 and to support the re-construction process.



### 2.2: Questionnaire. Jangchub Choeling Monastery Pokhara

Director: Dupsing Rinpoche

- no fatalities or injuries during the earthquake

Number of inhabitants: Between 70 and 80 monks are currently living in the monastery. This number rises at times to up to 120. Soon the monastery is to accommodate another 10-12 monks who lived in the Gorkha region that was badly destroyed by the earthquake.

There are 4 employees. The chef and her husband lost everything during the earthquake and are now also living in the monastery.





Medical and social conditions:

2-3 older monks are suffering from high blood pressure and diabetes but both conditions are already being treated, and the monks have received medication.

There are no medical or hygiene-related issues.

In the case of an illness, monks are required to cover the cost for medication themselves. They finance this by saving the money they raise when selling goods in the craft shop. Furthermore, in agreement with Dupsing Rinpoche, they will receive money from the KHCP.

Dr. Sonam and Dr. Angelika examined the young monks and there were no abnormalities.

Medical treatment for worm infections and vaccinations are being discussed. Dr. Sonam taught about health and hygiene.

Building condition:

Nothing happened.

Other:

The monastery is well supplied through Shangpa Rinpoche and their own shop.

They are very happy to receive the visits of the KHCP, and they wish to continue their collaboration. They expressed the wish for dental treatments as well as hygiene education.

Dupsing's and Shangpa Rinpoche's institutes received €20,000 from the KHCP to cover the cost of health care for 2015/16. Aid will be paid as part of this sum.

**2.3: Nunnery in Muktinath/Mustang:** no fatalities or injuries during the earthquake are reported

**2.4: Monastery in Lumbini/Nepal:** no fatalities or injuries during the earthquake are reported

### 3. Beru Khyentse Rinpoche

#### Questionnaire. Karma Tharjay Chokorling Kadgyupa Monastery in Boudha

Director: Beru Khyentse Rinpoche

- no fatalities or injuries during the earthquake

Number of inhabitants:

Normally, 45 monks live in the monastery, but most of them are currently in Bodhgaya. Only Lama Pasang and two monks are currently living there. There are two employees: a chef and a cleaner.

Medical and social conditions:

A monk is severely ill, suffering from tuberculosis and hepatitis. The KHCP provided €3,000 to cover cost of his treatment. For 6 weeks he has been in the care of Dhulikhel Hospital.

Another monk who was also suffering from tuberculosis was treated successfully. He only has to attend a follow-up examination in Dhulikhel.

The monastery receives an annual health care fund by the KHCP. Except for this, it is hard-pressed for money, as it is only financed by Beru Khyentse Rinpoche.

Building conditions:

The monastery is quite badly damaged but, according to engineers, it is possible to repair it. The roof has completely collapsed.

Other:

Lama Pasang is looking forward to the next KHCP Medicalcamp once the monks have returned from Bodhgaya. Dr. Sonam will be in charge of this. Laypeople from the surrounding areas can also attend the camp to be examined and treated. The monks are looking forward to a continuing collaboration with the KHCP in the future.

The KHCP provides €7,000 for health care and rebuilding work, and an additional €3,000 for treatments in Ohm Hospital.

#### 4. Sang Sang Rinpoche

##### **Questionnaire. Lhundrup Choling Kagyu Monastery, Bhudhanilkantha**

Director: Sang Sang Rinpoche.

- no fatalities or injuries during the earthquake

Number of inhabitants: 38 monks and 8 employees are living in the monastery.

Medical and social conditions:

The monastery is equipped with a doctor's consultation room. Every one to two weeks, the Himalayan Medical Foundation sends a doctor to examine and treat the monks. The medication is partially provided by the doctor and partially bought by the monks themselves. All are vaccinated and nobody is suffering from severe illness. The monastery receives annual funds from the KHCP for health care.

Building condition:

The building is mostly intact, at least not severely damaged. The exception is one room in the attic that has to be torn down and rebuilt.

Other:

When offered help, the monastery said that they didn't require any but the second monastery from Sang Sang Rinpoche (Lundhrup Choeling Monastery in Eastern Nepal) and the nun's retreat centre (Chokhor Yangtse Nunnery Retreat Centre) have been severely damaged. The KHCP will contact Sang Sang Rinpoche to inquire about how we can provide help. We have put €7,000 aside for this. The monks wish to continue the collaboration with the KHCP.



#### 5. Lopön Tsechu Rinpoche

##### **Questionnaire. Sangey Choeling Monastery in Kimdol / Kathmandu**

Director: Lopön Tsechu Rinpoche

- no fatalities or injuries during the earthquake

Number of Inhabitants: Approximately 100 monks, a few nuns and 8 employees live in the monastery.

Medical conditions:

It was the first time the KHCP visited this site and we will try to integrate the monastery into the KHCP in the future.

Almost all of the young monks have bad teeth, fungal infections on the head and other parts of the body, as well as problems with basic hygiene. They have no regular medical care provision and there appears to be a lack of responsibility taken to address this. Several acute and chronic illnesses were diagnosed.

Starting immediately, all affected can be treated in Dhulikel Hospital.

Altogether, 42 people were examined. Sonam taught the young monks about healthcare and dental hygiene and they were given medication to treat their worm infections. KHCP physician, Dr. Sonam, will also take care of the monks' vaccinations and organise a visit of a team of dentists from Dhulikhel.



**Building conditions:**

Only minor damages to the monastery. The Gompa is affected. An engineer has not visited the site yet to evaluate the safety of the building. For this reason, the monks are currently using the dining room for their pujas.

Out of fear, the monks are sleeping in tents.

The Sangey Choeling Monastery will receive €7,000 to cover the costs of health care and rebuilding.

**6. Sharminub Foundation of Shamar Rinpoche**

also containing some locations such as the old monastery at Swayambhu

**Questionnaire. Sharminub Retreat Center**

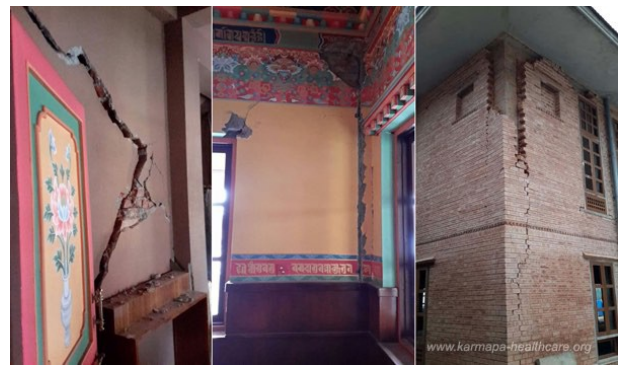
**Director:**

Shamar Rinpoche's new monastery with retreat area, currently managed by Jigme Rinpoche and Tsering Dhondup

- no fatalities or injuries during the earthquake

**Number of inhabitants:**

The large building is currently used as a refuge for people from badly affected areas, including monks from Swayambhu where the monastery was completely destroyed. The monks will return once the reconstruction work is completed. The monks who were on retreat also survived the earthquake well!



**Medical and social conditions:**

Jill is part of the administration team and described the situation.

She reports that the earthquake has left many traumatised. She brings in a boy (name: Surya Bdr. Waiba, aged 15), who has heart problems. He suffered from rheumatic fever which caused damage to his cardiac valve. He is in urgent need of surgery, which will cost approximately 1 million rupees (€ 10.000). Only half of the money he requires is covered by the state hospital Gangale, the only hospital equipped to conduct such surgery. The remaining 500,000 rupees have to be raised through donations. The boy is accompanied by Sabchu Rinpoche.

If you would like to contribute, please get in touch with the KHCP. Dr. Sonam of Dhulikhel is trying to find other ways to raise the money.

Dr. Sonam and Jill are trying to provide first aid kits.



**Building conditions:**

There is very little damage to the construction site. The retreat centre also remains mostly undamaged.

**Other:**

The Karmapa-ShamarNag Committee, which is currently residing here, receives €20,000 from the KHCP for emergency relief for those rural areas that are affected by the earthquake. It is worth mentioning that the villagers were given materials and building instructions for shelters, to accommodate them during the monsoon period. One shelter for one family costs only 4,000 rupees (about 40€), as only local materials are used. Even small donations can be put to great use here.



## 7. Orphanages

### 7.1 : Questionnaire. Sertshang Orphanage

Director: Chogyal Rinpoche

Key Person: Methok Dawa Sherpa

- No fatalities or injuries during the earthquake.

Medical condition:

Suspicion of tuberculosis could be dispelled.

Dhulikhel Hospital is conducting further observations.

Children received a health screening from Dr. Sonam.

We found that many of the children are insufficiently vaccinated or not vaccinated at all. We discussed this matter with Chogyal Rinpoche, the director of the orphanage, who agrees to vaccinate the children. None of the children have suffered trauma.

Building condition:

Minimal damage was done to the building – only superficial cracks are visible. Apparently, engineers have examined the property and declared that there was no danger of the building collapsing. Nonetheless, the children are sleeping outdoors out of fear.

The SOH and the orphanage received joint funds of €6,500 for HIV infected children.



### 7.2: Questionnaire. HIV Orphanage of Chogyal Rinpoche

Director: Chogyal Rinpoche

- No fatalities or injuries during the earthquake.

Number of inhabitants: 27 children, of whom 21 are HIV positive

Medical and social conditions:

The director and founder of the orphanage informs us that those with the HIV infection are being stigmatised and discriminated against.

They have good medical care through the availability of medication and even a psychologist who visits the facilities and works with the children for four hours per week. The main expense is conducting HIV tests as these, unlike the medication, are not state-funded. Money for the orphanage to fund these tests is raised through Western organisations, one being situated in Switzerland. Chogyal Rinpoche also supports the orphanage by sponsoring the food. From now on, by linking the orphanage to Dhulikhel Hospital and by making donations, the KHCP will also offer regular support.



Building condition:

Some damage was caused to the building but it is not considered major. The water tank was destroyed in the earthquake. We decided to finance a new water tank up to the value of 15,000 rupees for which we received a receipt and the promise of a photograph of the installed water tank.

### 7.3: Questionnaire. Sparks Children Home in Lalitpur

Directors: Brigitta and Willi Kröger

- no fatalities or injuries during the earthquake

Number of inhabitants:

13 children are currently living in the children's home.

Medical and social conditions:

During the earthquake, two children were only mildly injured when a wall collapsed onto them. A boy broke his arm, but he is already recovering without the need for a cast. The second boy suffered from a laceration on his head, but he is also feeling well again.

Other than that, the children are healthy and well looked after. Dr. Angelika and Dr. Sonam have examined them. One child has to go to Dhulikhel Hospital for a check-up.

Building conditions:

The building is not badly damaged. There is some repair work that has to be carried out on the top floor. A water tank has been placed in the courtyard while the water supply is interrupted and no clean drinking water is available.

Other:

The KHCP will cover the cost of €6,500 for the reconstruction of the building and to repair the water supply.

The orphanage will also be supported by the KHCP in the future.



### 8. Dhulikhel Hospital (sponsored by KHCP)

**May. 27, 2015:**

**Interview with University Hospital Kathmandu**

Interview of Dr Angelika Leist (KHCP) with Dr Ram Sheestra (director of the University Hospital Kathmandu in Dhulikhel) talking about the situation and the work after the earthquake.

**Activity of the Dhulikhel Hospital and its 30 branches in the four weeks after the earthquake**

Saturday, April 25 (Sunday in Nepal), business as usual, only emergency staff 3 hours after the earthquake, about 500 employees on duty, despite breakdown of telecommunications and damage or destruction of 50% of the staff living quarters.

Life-saving operations started simultaneously in all of the nine operating theatres;  
Staff working all shifts for 72 hours, with the occasional 1-2 hours of sleep from exhaustion  
After three days work resumed to 12-hour day and night shifts.  
Most hospitals in the Kathmandu valley were shut down in the first two days.





People were brought in by helicopter, tractors, trucks, car and on foot; covered in debris and loam of the collapsed houses; lying dirty in beds, corridors, on the floor, cleaned with wet cloths or hosed down outside, showing coloured dots: green, yellow, orange and red, depending on the severity of the injuries; provided with number plates and treated free without registration.

About 3,000 large and small operations were conducted, mainly open and closed fractures, as well as cases of simple and multiple fractures of ribs and vertebrae; often with complications like haemorrhages in the chest or necessary amputations.

All earthquake victims were regarded as charity cases!

The number of treated patients in the hospital and its branches: 6,000

On April 28, today, there are still 450 inpatients, 300 of which were earthquake victims who were continued to be treated for free. \

The patients' family members received gratuitous meals from a tented outdoor kitchen.

Five big problems in the hospital during the catastrophe:

1. No electricity for three days in Dhulikhel; generators provided emergency power only for lighting in the operating theatres and patient rooms; not enough power for x-ray, CT or washing machines to clean the scrubs.
2. profound lack of water; complete breakdown of water supplies for hours, continuing to this day
3. no communications due to power failure, landlines down, mobile networks rebooted after a few hours
4. traffic chaos: roads leading to hospital were blocked by vehicles for a long time
5. shelters: in the face and fear of aftershocks accommodations at ground level in scarce supply; up to May 22, there were 250 !!!! smaller earthquakes with magnitudes of above 4 on the Richter scale.

## **9. Committees and Trusts**

### **9.1: Manang Gumpa, under supervision on Manang Trust**

#### **Meeting with the Manang Social Service Community**

It is like a miracle that nobody was hurt at the collapse of the Manang Gumpa. At the time of the collapse, a festival was taking place outdoors, whereby nobody was inside the Gumpa during the earthquakes. The building was completely destroyed. The Manang Social Service Community has already started to plan the rebuilding. The new Gumpa is to accommodate 2,500 people and its construction is to be safe from earthquakes! Sherab Gyaltsen Rinpoche will decorate the building personally. The cost for the reconstruction of the Gumpa is estimated to exceed €1,000,000 and take 2 years to complete. The building costs are covered exclusively by donations.

The KHCP has agreed to donate €10,000 as we have been using a clinic room that is located on the grounds of the Manang Gumpa for many years, and this way we have been able to treat many people.





## **KHCP Medteam's meeting with Sherab Gyaltsen Rinpoche**

In the evening, we meet Sherab Gyaltsen Rinpoche who thanked us and blessed us for our activities.

When we asked him how the KHCP could support him. He immediately responded that the reconstruction of the Manang Gumpa of the monastery of Nala was of the utmost importance. He asked for the KHCP to collect donations for this purpose, but we are already doing this!

## **9.2: Karmapa Shamarnag Committee**

KHCP transferred € 20.000 to support their aid campaigns in the remote areas of Nepal.

## **9.3: K.I.B.I. New Delhi / India**

"Dear Pia and Peter and KHCP friends!

It is wonderful to see how much compassion and generosity came together from all of you to help over many different organisations to so many people in Nepal. I received from KHCP over Western Union INR 130.445 and € 3'000 in cash.

From the INR amount we paid the truck transport. The cost of the transport was INR 54'000.

The truck was full of goods such as: 1000 tarps, 1000 wool blankets, 100 meter of strong rope, different hardware tools for building new houses etc. and different safety gears for dismantle and building. Those items were purchased with the help of mainly Swiss sponsors.

We are also very grateful to all the helpers along the whole process. Starting from the donors, the helpers in Delhi for the shopping of the goods, finding the truck-company and drivers who were willing to go after the second earthquake, to the ones loading and unloading and loading again. And to the volunteers of Karmapa ShamarNag Committee distributing to all the different villages.

Looking forward to continue the actions. I will keep you updated.

With many thanks and best wishes, Bettina"

## **9.4: Lama Nyima Campaigns**

Lama Nyima from Dhagpo Kagyü Ling in France traveled with a group of volunteers to different villages in the remote areas. All this villages are still cutoff from every support by international aid organisations.

„Dear Sir/Madam

On 4<sup>th</sup> June it was our another relief project for school named shree Indradevi lower secondary school located on Ramechhap district (Fulashi V.D.C -Chuwantar-1)

we travel 150 KM along mountain and village to reach the destination and start the construction of temporary classrooms for children. As per the request of the school community we built 3 temporary classrooms and replaced all the damaged blackboard with Whiteboard and provided all teaching materials to teachers and stationary goods to the childrens it had been hard 3 days for our team because we could see only women, children and old people to support there as all the young people were aboard for employment.

We were relieved after we finished our construction and also received huge thanks with flower from childrens and villagers.

To all the supporters, all childrens and villagers have send huge thanks for all of you.



## 10: Public Medical Camp KHCP/DHK

In July, Karmapa's Healthcare Project in cooperation with Dhulikhel Hospital conducted a successful medical camp also for local habitants at Braga Gumpa, Swayambhu.

Team from different department; EYE, General Medicine, Dental, Pediatric and Acupuncture are involved. Thanks to Acupuncturist without Borders. We treated more then 435 patients.

A detailed photo report will be published soon on [www.karmapa-healthcare.org](http://www.karmapa-healthcare.org) .



## Receipts and thank-letters

----- Original Message -----

**Subject:** Re: all payments are done 6.500 Euro

**Date:** Fri, 26 Jun 2015 16:48:58 +0200

**From:** ur lucky friend <[luckytulku@...](mailto:luckytulku@...)>

**To:** Peter+Pia Cervený-KHCP-Karmapa Healthcare Project <[info@karmapa-healthcare.org](mailto:info@karmapa-healthcare.org)>

„.... Thank you very much Karmapa Healthcare Project for your great work and support to Nepal earthquake and Sertshang Orphanage Home.  
I really admire way KHCP work.

Wish you Good luck. !

Chogyal Rinpoche "



## Receipts and thank-letters



The 17th Karmapa Trinley Thaye Dorje

To all the donors of KHCP

New Delhi, June 10, 2015

Dear friends,

It has come to my attention that you have been extremely generous in helping the victims of the disastrous earthquakes in Nepal, and I would like to extend to you my heartfelt gratitude for your generous support.

With prayers

Karmapa Trinley Thaye Dorje





ཇཉའུབ་ཅུའུག་གྲུང་རྒྱལ་ཆོས་གླིང་།  
JANGCHUB CHOELING MONASTERY

Reference: .....

Date: .....

1<sup>st</sup> July, 2015

RECEIPT

Received with much thanks to Karmapa Health Care Project, Germany for a sum of € 20,000/ (Twenty Thousand Euros) only towards health care of monks for year 2015-2016 and rebuilding for Drubgyud Dhargeyling Monastery or Kagyu Institute for Buddhist Studies Kirtipur, Tharpa Choeling Nunnery Mukhtinath, Drubgyud Choeling Monastery Lumbini and Jangchup Choeling Monastery Pokhara.

Thanking you very much.



Management Committee  
Jangchup Choeling Monastery  
Pokhara



## THARJAY MONKS COMMITTEE

UNDER THE AUSPICES OF HIS EMINENCE BERU KHYENTSE RINPOCHE

To the Karmapa Healthcare Project and its Donors,

On this occasion I would like to convey my heartfelt thanks for your kind generosity in these shaken times.

We have received 7000 Euro from KHCP which supports us incontinuously providing healthcare for the monks of Karma Tharjay Chokhorling Monastery in the coming year. At the same time we have to rebuild and renovated the buildings of the monastery that were severely damaged by the earthquakes, so that we can provide safe and comfortable accommodation for our resident monks and lamas.

We have further received generous 3000 Euros for the medical treatment of Jampal Sangpo. We hope that he will recover soon thanksto the hard and dedicated work of the doctors and staff in Dhulikhel Hospital.

Once again I want to thank you for your generosity and kindness that you have shown not only to the monks and nuns of our lineage but all victims of the devastating earthquakes in Nepal.

Sincerely,

*Beru Khyentse Rinpoche*

BeruKhyentse Rinpoche



DHULIKHEL HOSPITAL  
KATHMANDU UNIVERSITY HOSPITAL



15<sup>th</sup> June, 2015

The Karmapa Health Care Project  
Germany

Sincere Acknowledgements!!!

Dear Sir/Madam,

We highly appreciate and thank you for the gracious support of you provided during the time of crisis and need in Dhulikhel Hospital -Kathmandu University Hospital (DH-KUH). We received the fund of **Euros 25.000** very safely and are being used for medical consumables, surgical equipment for providing quality health services to the earthquake survivors and the community people.

As you are aware that Nepal was hit by a devastating earthquake on 25th April and again re-hit on 12<sup>th</sup> of May 2015 that affected more than 10 million people killing more than nine thousand and counting. Whole villages have been wiped out. Thousands of people are still homeless and need immediate medical and basic aid. Most of these patients have lost their homes; many are still missing while others are still buried under the rubbles.

We, at Dhulikhel Hospital constantly focused and is still focusing on saving lives round the clock since the earthquake. We commenced our free medical services immediately after the earthquake and varieties of injuries, trauma, wound, and fractures have been treated here. From 25<sup>th</sup> April to 10<sup>th</sup> June, 3679 earthquake survivors are treated, 554 complex surgeries such as posterior stabilization pedicle screw fixation, open reduction internal fixation, full thickness skin grafting etc. and 3414 procedures and other surgeries were conducted in DH-KUH and highly affected communities.

Your valuable support to DH-KUH for providing the quality services to the earthquake survivors of Nepal is highly appreciated and DH-KUH aspects for the same support and hand in future as well.

Thank you.

A handwritten signature in black ink is written over a circular green logo of Dhulikhel Hospital. The logo contains a white leaf-like shape and the text 'DHULIKHEL HOSPITAL' and 'NEPAL'.

Dr. Rajendra Koju  
Administrative Director  
Dhulikhel Hospital





शेरछाङ्ग अनाथ आश्रम

༄༄གསེར་ཚང་དུ་ཐུག་གསོ་སྐྱོད་ཁང།

Regd. No: 872/060/61  
S.W.C.A. No: 16055



## SERTSHANG ORPHANAGE HOME

Date: 06.25.2015

Dear KHCP Team and Donors,

We (Sertshang family) are writing this letter to express our deepest heartfelt thanks for your generous contribution of 6500 Euro to our "Sertshang Orphanage Home as Donation.

As you have advised us, we will try our best to use this amount of money for Children's health care in this year/next year and also for the rebuilt of SOH building.

We thank you once again for the support and compassion we have received from you.

Sincerely,

Methok

  
Treasurer of S.O.H

K.I.C.P. Nepal, Dhulikhel		Phone: 977-1-44550000
DHAGPO SHEYDRUB LING FOUNDATION Anap Tola, Ward No. 2, Nala Tobuwa P.O., Kathmandu-1100 (Nepal)		ལྷ་མོ་ཤེ་དཱ་ལིང་གཞི་རྒྱུ་ འགྲུབ་པའི་སྒོ་ནས་ཀྱི་སྒོ་ནས་ ལྷ་མོ་ཤེ་དཱ་ལིང་གཞི་རྒྱུ་ འགྲུབ་པའི་སྒོ་ནས་
<b>Maripa Serap Gyolchen Rinpoche</b>		
Ref. No. _____	Date <u>26-06-2015</u>	
<p>Dear members of KICP,</p>		
<p>We the DHAGPO SHEYDRUB LING FOUNDATION hereby confirm that we have received Euro 10,000. donations from KAFMAPA HEALTH CARE PROJECT for the renovating Dhagpo Sheydrub Ling Monastery, (Nala monastery) that was damaged during recent earthquake occurred in Nepal 25-04-2015. Thank you for your kind help.</p>		
<p>With best regards, Serap Gyolchen Rinpoche (Founder) Dhagpo Sheydrub Ling Foundation.</p>		
<p>G.P.O. Box No. 8874 P.O. Box 471, Kathmandu, Nepal. Telephone: (00977-1) 4277013 ལྷ་མོ་ཤེ་དཱ་ལིང་གཞི་རྒྱུ་འགྲུབ་པའི་སྒོ་ནས་ཀྱི་སྒོ་ནས་ལྷ་མོ་ཤེ་དཱ་ལིང་གཞི་རྒྱུ་འགྲུབ་པའི་སྒོ་ནས་</p>		



Regd. No. 2818/106

Harihar Bhawan  
Pulchowk-3, Lalitpur  
T : 6915916  
E : spark.chhome@gmail.com

Dear KHCP, Pia and Peter,

Everyone around the world stood still when they heard the news of Nepal being shaken into such destruction. Our lovely home filled with 13 beautiful children got affected by this unforgiving act of nature. However our children are the very strength of pillar who even with all the tremors and being displaced from their home at Spark haven't had their morals and positivity shaken off.

As much as the children are responsible and can take care of each other, they are still children and need constant guidance and moral boost. Physically being here in Nepal the moral support and guidance is one type of support that the Spark family has been providing.

However, since we have been affected by the earthquake on the physical level it has been vital that we receive as much financial support from the well wishers of Spark. This very financial support that you have provided is something that will help us rebuild and restore the damaged Spark building. Without your generosity and love it would have been difficult to provide our children a safe roof over their heads.

We also very much appreciate the health checks provided for the children by Dr Angelica and Dr Sonam at Spark Children Home. The time and dedication shown towards the children was humbling and appreciated not only by us but the children themselves. The further health check that will be carried on at the Dhulikhel Hospital for Birendra, one of the boy injured by the earthquake will help to strengthen him physically and also mentally.

So from the bottom of our hearts we thank you for the generosity and the beautiful gift of love and support. During this time you have provided us with the much needed financial and health support to give Spark a new beginning and a safe future. This generosity through the big hearts of each and every individuals involved will most definitely change the lives of 13 children and also help support the Spark family in an immense way.

We look forward to your continued journey with Spark through the hardest of times to the beautiful future ahead. We cannot emphasise enough our gratitude towards your support.

With Much Appreciation and Humble Regards,  
The Children's of Spark and Spark Children Family





## श्री देउराली माध्यमिक विद्यालय Shree Deurali Secondary School

वित्त देउराली गा.वि.स.-७  
Birta Deurali V.D.C.-7

भोलुङ, काभ्रे  
Bholung, Kavre

स्थापित: २००६  
Estd.: 2006 B.S.

विद्यालय कोड : २३०१०००५  
School Code: 23010005

मिति: २८<sup>th</sup> May 2015  
Date:

पत्र संख्या:-

चलानी नं.:-

विषय:-  
Subject:-

Thanking letters

Mr. Nyima and his friends  
A group from France

This is to certify that Mr. Nyima and his friends have given thanks letter to support for constructing building for the temporary settlement to the students which were damaged by the Earthquake happened at 25<sup>th</sup> April 2015.

We wish for his bright future.

Chairman  
The School Management Committee

Durgapant  
Headmaster



## Karmapa Shamarnag Relief Committee

July 1, 2015

Pia and Peter Cervený  
Karmapa Healthcare Project

Dear Pia and Peter,

On behalf of the entire Karmapa Shamarnag Relief Committee, I would like to extend my sincerest gratitude for your generous donation of 20,000 euros. Without your support and the support of your donors, we could not continue to help the Nepali people and restore villages that were decimated in the recent earthquakes.

With your donation, we have begun constructing semi-permanent housing for villagers whose homes were flattened, reconstructing water systems that provide communities with drinking and washing water, and installing solar power to community buildings and monasteries so that power is restored in villages.

We thank you again for your immense generosity in support of rebuilding Nepal!

With sincerest thanks,

Karma Tsering Dhondup  
Vice-President, Karmapa Shamarnag Committee

Contact No. 9803569784, 9801034777, Kathmandu, Nepal

**[www.karmapa-healthcare.org](http://www.karmapa-healthcare.org)**